

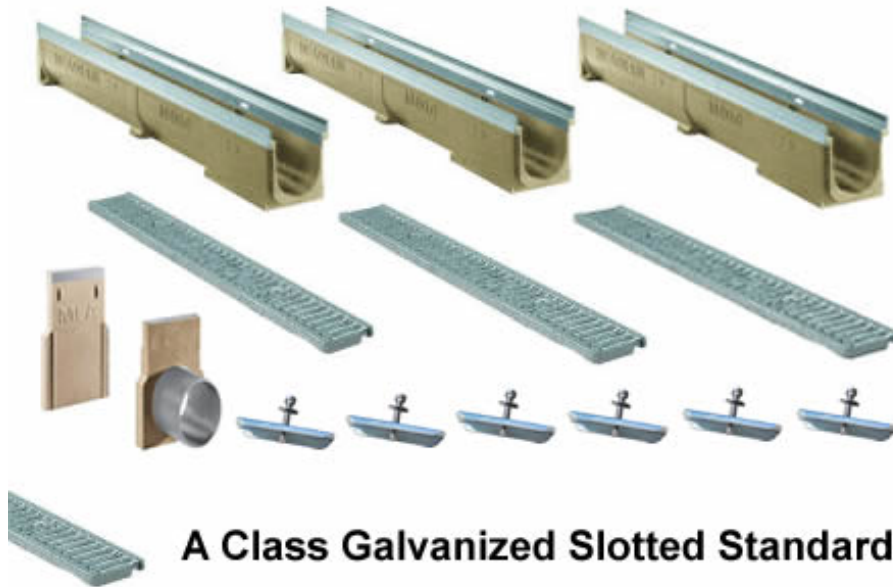
**CPS504 Complete Kit**

Series

**CPS504**

Cover Sheet

J1000 Series

**4" Wide J1000 Polymer Concrete Galvanized Edge Trench Drain Kit  
10 - 99 Foot Complete****New Galvanized Edge Commercial Trench Drain  
4 Inch Wide - A Class Galvanized Grates Standard****Complete system - Each Kit Includes:**

Specified number of 1 meter sections of trench drain

Specified number of Galvanized Slotted Grates

Specified Number of Galvanized Locks

1 - Solid End Cap and 1 - 4" End Outlet

**Key advantages of J1000 Galvanized Edge:**

- Galvanized edge provides clean, uniform edge to finish surface.
- Select heel-proof perforated or slotted grates.
- Protected edge prevents chipping abuse from forklift wheels.
- Select ductile iron or reinforced slotted grates to withstand heavy loads.

**MEA**

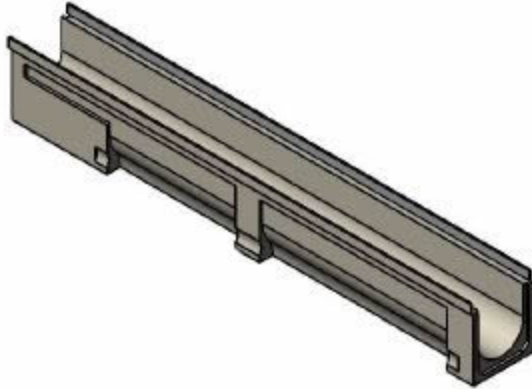
Quality engineered trench drain system

1-877-903-7246



www.trenchdrainsupply.com

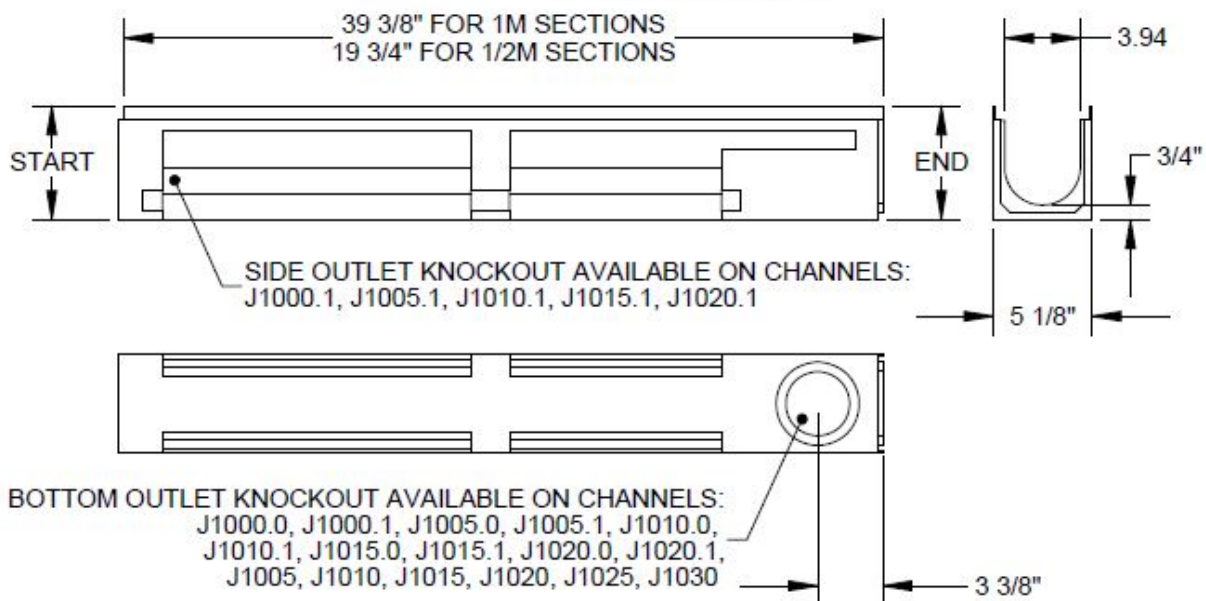
Number	Series
<b>J1000</b>	<b>CPS504</b>
	J1000 Drainage Channel
	155401



PART NUMBER	DIM "START"	DIM "END"
J1001	5.9	6.1
J1002	6.1	6.3
J1003	6.3	6.5
J1004	6.5	6.7
J1005	6.7	6.9
J1006	6.9	7.1
J1007	7.1	7.3
J1008	7.3	7.5
J1009	7.5	7.7
J1010	7.7	7.9
J1011	7.9	8.1
J1012	8.1	8.3
J1013	8.3	8.5
J1014	8.5	8.7
J1015	8.7	8.9
J1016	8.9	9.1
J1017	9.1	9.3
J1018	9.3	9.5
J1019	9.5	9.7
J1020	9.7	9.9

PART NUMBER	DIM "START"	DIM "END"
J1000.0	5.9	5.9
J1000.1	5.9	5.9
J1005.0	6.9	6.9
J1005.1	6.9	6.9
J1010.0	7.9	7.9
J1010.1	7.9	7.9
J1015.0	8.9	8.9
J1015.1	8.9	8.9
J1020.0	9.8	9.8
J1020.1	9.8	9.8
J1000-5	5.9	6.9
J1005-10	6.9	7.9
J1010-15	7.9	8.9
J1015-20	8.9	9.8

J1021-J1030 ALSO AVAILABLE



## Manufacturer



Quality engineered trench drain system

## Specification

MEA-JOSAM J1000 SERIES POLYMER CONCRETE DRAINAGE CHANNEL WITH BUILT IN GALVANIZED STEEL EDGE PROTECTION, SUPPLIED BY TRENCH DRAIN SUPPLY.

DISCLAIMER - The customer and the customer's architects, engineers, consultants, and other professionals are completely responsible for the selection installation and maintenance of any product purchased from Trench Drain Supply and/or its manufacturers. TRENCH DRAIN SUPPLY MAKES NO WARRANTY, EXPRESS OR IMPLIED, AS TO THE SUITABILITY, DESIGN, MERCHANTABILITY, OR FITNESS OF THE PRODUCT FOR CUSTOMERS APPLICATION. The drawing and information provided remain the property and copyright of the manufacturer listed. The manufacturer reserves the right to modify specification without notice.

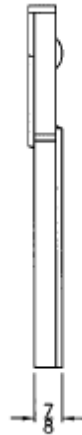
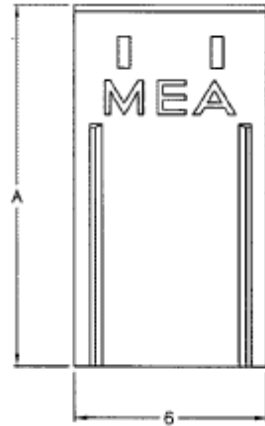
1-877-903-7246



www.trenchdrainsupply.com

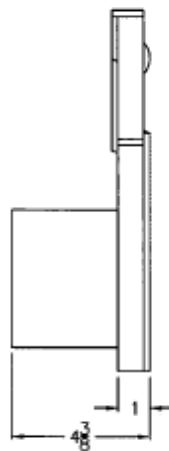
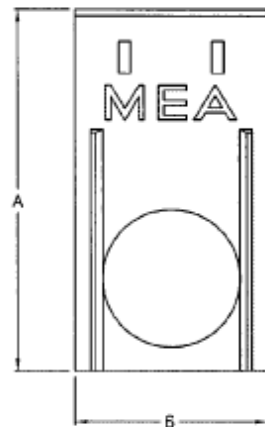
Number	Series
151471	CPS504 End Cap w/ Galvanized Steel Edge

POLYMER CONCRETE SOLID END CAP  
FOR START AND END OF CHANNEL




TYPE	PART NUMBER	A
1000.SE	151471	9-3/8
1030.SE	151472	11-3/8

POLYMER CONCRETE END CAP  
FOR CHANNEL END WITH  $\phi$  4-5/16" PIPE CONNECTOR



TYPE	PART NUMBER	A
1000.E	151473	5-3/4
1005.E	151475	6-3/4
1010.E	151477	7-3/4
1015.E	151479	8-3/4
1020.E	151481	9-3/4

Manufacturer	Specification
 Quality engineered trench drain system	MEADRAIN J1000 POLYMER CONCRETE END CAP WITH GALVANIZED STEEL EDGE, SOLID OR WITH PIPE CONNECTION. SUPPLIED BY TRENCH DRAIN SUPPLY.

DISCLAIMER - The customer and the customer's architects, engineers, consultants, and other professionals are completely responsible for the selection installation and maintenance of any product purchased from Trench Drain Supply and/or its manufacturers. TRENCH DRAIN SUPPLY MAKES NO WARRANTY, EXPRESS OR IMPLIED, AS TO THE SUITABILITY, DESIGN, MERCHANTABILITY, OR FITNESS OF THE PRODUCT FOR CUSTOMERS APPLICATION. The drawing and information provided remain the property and copyright of the manufacturer listed. The manufacturer reserves the right to modify specification without notice.

1-877-903-7246

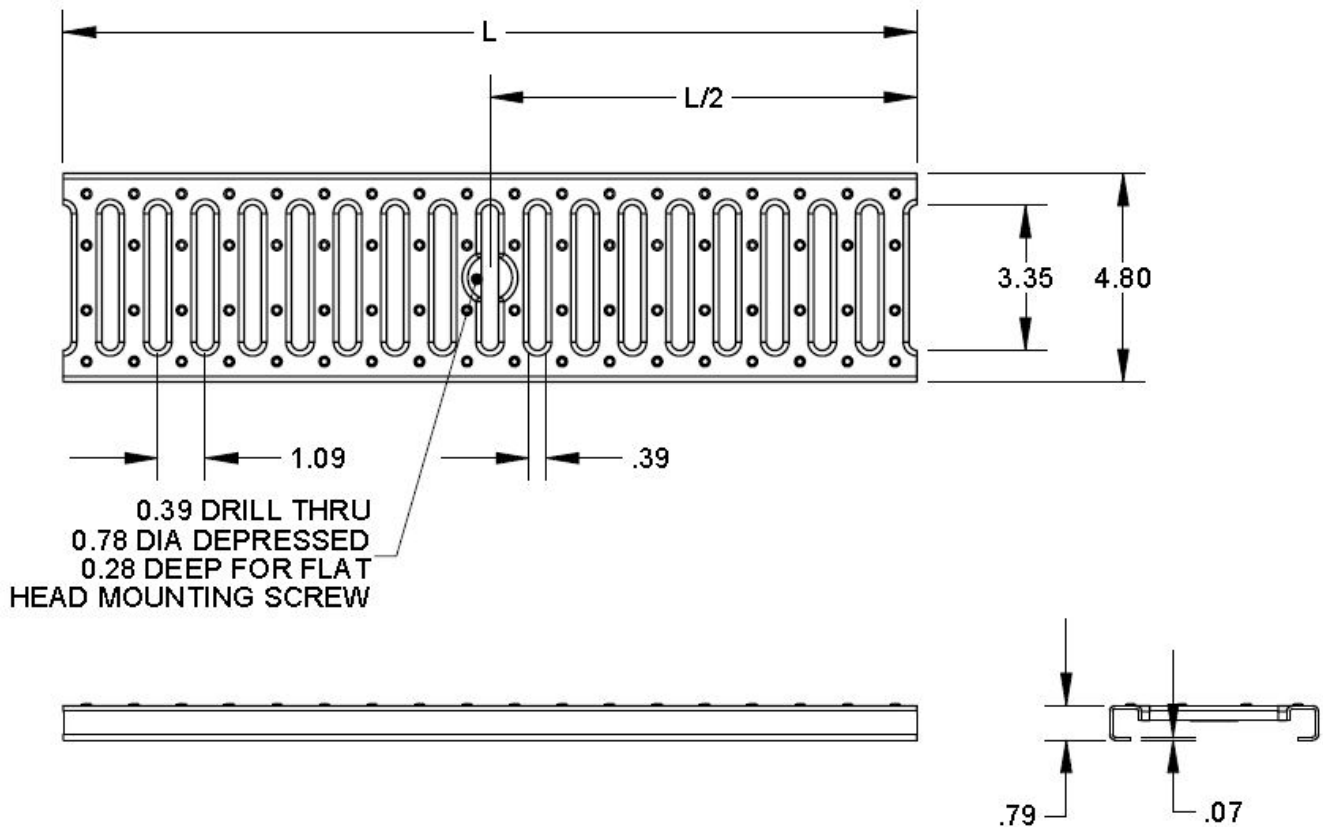



www.trenchdrainsupply.com

Number	Series
<b>152101</b>	<b>152101</b> A Galvanized Steel Slotted 1000 Series Grates



PART NUMBER	"L" DIMENSION	FREE AREA
152101	39.4" [1000mm]	45.8 SQ. IN.



Manufacturer	Specification
 Quality engineered trench drain system	MEA 152101 GALVANIZED STEEL SLOTTED TRENCH DRAIN GRATE WITH CLASS A LOAD RATING (3,500 LBS. - 70 PSI), SUPPLIED BY TRENCH DRAIN SUPPLY.

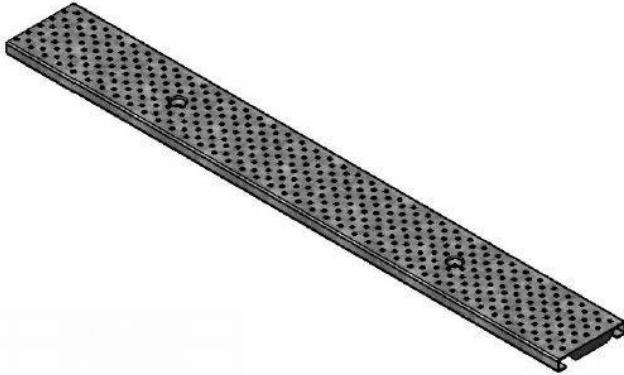
DISCLAIMER - The customer and the customer's architects, engineers, consultants, and other professionals are completely responsible for the selection installation and maintenance of any product purchased from Trench Drain Supply and/or its manufacturers. TRENCH DRAIN SUPPLY MAKES NO WARRANTY, EXPRESS OR IMPLIED, AS TO THE SUITABILITY, DESIGN, MERCHANTABILITY, OR FITNESS OF THE PRODUCT FOR CUSTOMERS APPLICATION. The drawing and information provided remain the property and copyright of the manufacturer listed. The manufacturer reserves the right to modify specification without notice.

1-877-903-7246

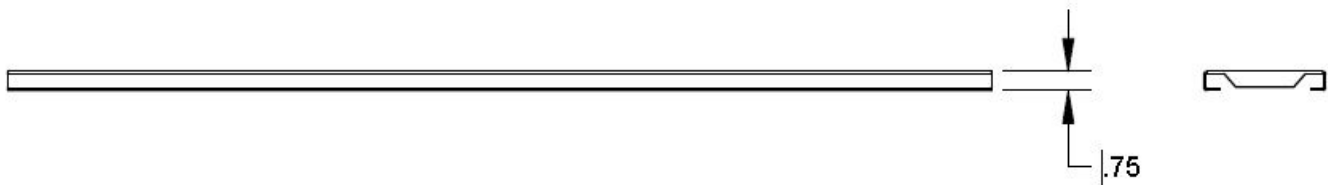
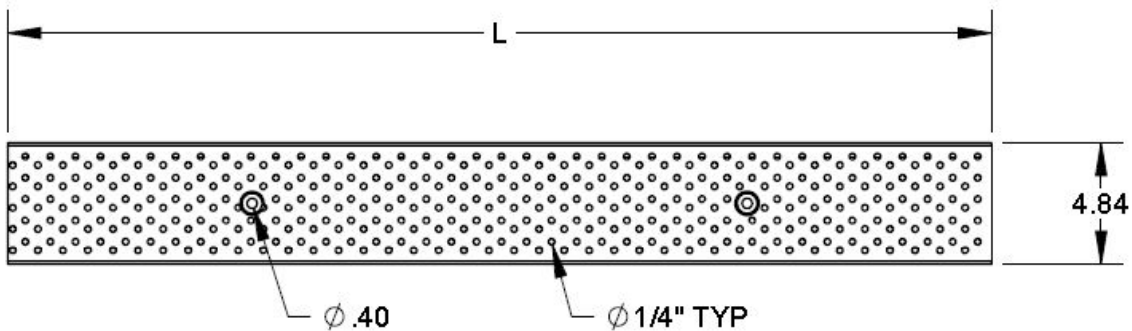


www.trenchdrainsupply.com

Number <b>152105</b>	Series <b>152105</b> A Galvanized Steel Perforated 1000 Series Grates
-------------------------	--



PART NUMBER	"L" DIMENSION	FREE AREA
152105	39.3"	37.5 SQ. IN.



#### Manufacturer



Quality engineered trench drain system

#### Specification

MEA 152105 GALVANIZED STEEL PERFORATED GRATE WITH RECESSES FOR LOCKING BAR SECURING FEATURE AND 1/4" PERFORATIONS DESIGNED TO FIT 100 AND 1000 SERIES CHANNELS. WITH CLASS A LOAD RATING (3,500 LBS. - 70 PSI), SUPPLIED BY TRENCH DRAIN SUPPLY.

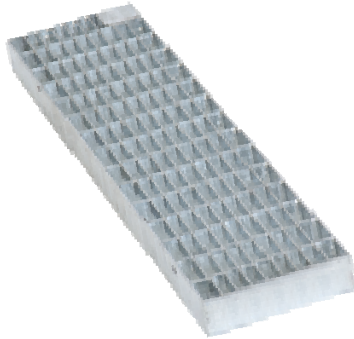
DISCLAIMER - The customer and the customer's architects, engineers, consultants, and other professionals are completely responsible for the selection installation and maintenance of any product purchased from Trench Drain Supply and/or its manufacturers. TRENCH DRAIN SUPPLY MAKES NO WARRANTY, EXPRESS OR IMPLIED, AS TO THE SUITABILITY, DESIGN, MERCHANTABILITY, OR FITNESS OF THE PRODUCT FOR CUSTOMERS APPLICATION. The drawing and information provided remain the property and copyright of the manufacturer listed. The manufacturer reserves the right to modify specification without notice.

1-877-903-7246

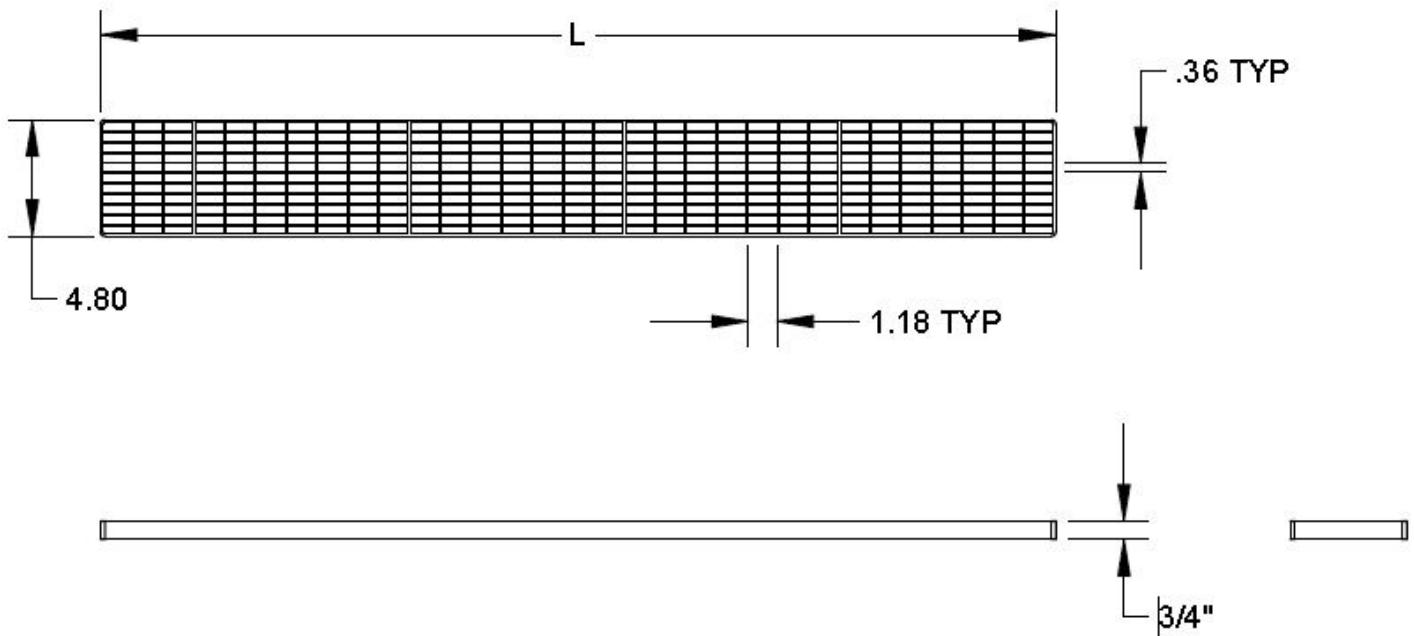



www.trenchdrainsupply.com

Number	Series
152801	152801 A Galvanized Steel Mesh 1000 Series Grates



PART NUMBER	"L" DIMENSION	FREE AREA
152801	39.4"	144.8 SQ. IN.



Manufacturer	Specification
 Quality engineered trench drain system	MEA 152801 GALVANIZED STEEL MESH TRENCH DRAIN GRATE WITH CLASS A LOAD RATING (3,500 LBS. - 70 PSI), SUPPLIED BY TRENCH DRAIN SUPPLY.

DISCLAIMER - The customer and the customer's architects, engineers, consultants, and other professionals are completely responsible for the selection installation and maintenance of any product purchased from Trench Drain Supply and/or its manufacturers. TRENCH DRAIN SUPPLY MAKES NO WARRANTY, EXPRESS OR IMPLIED, AS TO THE SUITABILITY, DESIGN, MERCHANTABILITY, OR FITNESS OF THE PRODUCT FOR CUSTOMERS APPLICATION. The drawing and information provided remain the property and copyright of the manufacturer listed. The manufacturer reserves the right to modify specification without notice.



1-877-903-7246



www.trenchdrainsupply.com

<b>Number</b>  <b>152312</b>	<b>Series</b>  <b>152312</b> B Galvanized Steel Mesh 1000 Series Grates
<div data-bbox="162 399 535 871"></div> <div data-bbox="771 577 1226 619"><b>FREE AREA: 144.8 SQ. IN.</b></div> <div data-bbox="154 976 1485 1606"><p>39.40</p><p>4.80</p><p>.43 TYP</p><p>1.18 TYP</p><p>1.17</p><p>3/4"</p></div>	
<b>Manufacturer</b>  <div data-bbox="154 1701 617 1837"> Quality engineered trench drain system</div>	<b>Specification</b>  MEA 152312 GALVANIZED STEEL MESH GRATE DESIGNED TO FIT 100 AND 1000 SERIES CHANNELS. MEETS CLASS B LOADING REQUIREMENTS (26,100 LBS - 580 PSI). SUPPLIED BY TRENCH DRAIN SUPPLY.
<p>DISCLAIMER - The customer and the customer's architects, engineers, consultants, and other professionals are completely responsible for the selection installation and maintenance of any product purchased from Trench Drain Supply and/or its manufacturers. TRENCH DRAIN SUPPLY MAKES NO WARRANTY, EXPRESS OR IMPLIED, AS TO THE SUITABILITY, DESIGN, MERCHANTABILITY, OR FITNESS OF THE PRODUCT FOR CUSTOMERS APPLICATION. The drawing and information provided remain the property and copyright of the manufacturer listed. The manufacturer reserves the right to modify specification without notice.</p>	

1-877-903-7246

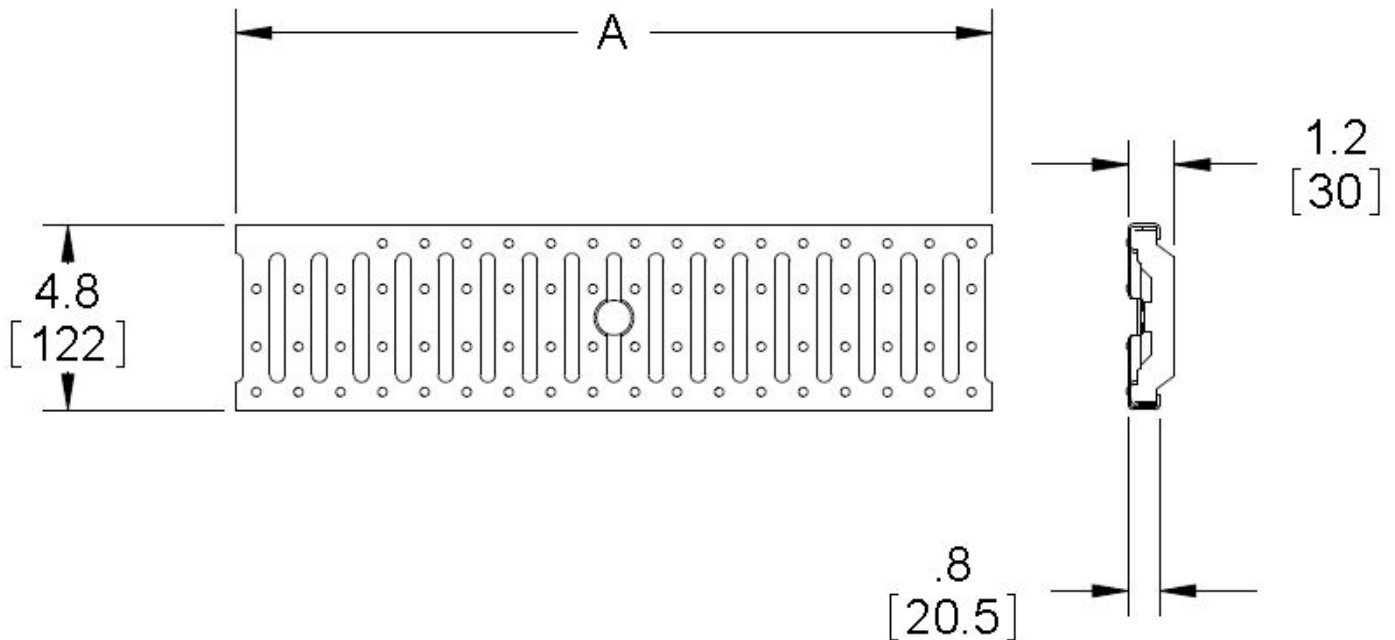


www.trenchdrainsupply.com


Number	Series
<b>152711</b>	<b>152711</b> C Galvanized Steel Slotted 1000 Series Grates



PART NO.	A
152711	39.3 [1000]



152731 SHOWN

Manufacturer	Specification
 Quality engineered trench drain system	MEA 152711 REINFORCED GALVANIZED STEEL SLOTTED GRATE WITH AVAILABLE LOCKING BAR SECURING FEATURE AND CLASS C LOAD RATING (56,000 LBS. - 1,162 PSI). SUPPLIED BY TRENCH DRAIN SUPPLY.

DISCLAIMER - The customer and the customer's architects, engineers, consultants, and other professionals are completely responsible for the selection installation and maintenance of any product purchased from Trench Drain Supply and/or its manufacturers. TRENCH DRAIN SUPPLY MAKES NO WARRANTY, EXPRESS OR IMPLIED, AS TO THE SUITABILITY, DESIGN, MERCHANTABILITY, OR FITNESS OF THE PRODUCT FOR CUSTOMERS APPLICATION. The drawing and information provided remain the property and copyright of the manufacturer listed. The manufacturer reserves the right to modify specification without notice.



1-877-903-7246



www.trenchdrainsupply.com

<p><b>Number</b></p> <p><b>152411</b></p>	<p><b>Series</b></p> <p><b>152411</b></p> <p>C Ductile Iron Slotted</p> <p>1000 Series Grates</p>
<div data-bbox="116 415 464 697"> </div> <div data-bbox="883 470 1227 541"> </div> <div data-bbox="963 579 1138 636"> <p>SECTION A-A SCALE 1 : 2</p> </div> <div data-bbox="272 768 1318 1312"> <p>19.61</p> <p>9.80</p> <p>1.09</p> <p>.41</p> <p>0.40 DRILL THRU 0.80 DIA DEPRESSED 0.28 DEEP FOR FLAT HEAD MOUNTING SCREW</p> <p>3.66</p> <p>4.80</p> </div> <div data-bbox="305 1381 1451 1587"> <p>A</p> <p>A</p> <p>.81</p> </div>	
<p><b>Manufacturer</b></p> <div data-bbox="157 1709 617 1829"> <p>Quality engineered trench drain system</p> </div>	<p><b>Specification</b></p> <p>MEA 152411 DUCTILE IRON SLOTTED GRATE, DESIGNED TO FIT 100 AND 1000 SERIES CHANNELS. MEETS CLASS C LOADING REQUIREMENTS (56,000 LBS - 1,162 PSI), SUPPLIED BY TRENCH DRAIN SUPPLY.</p>
<p>DISCLAIMER - The customer and the customer's architects, engineers, consultants, and other professionals are completely responsible for the selection installation and maintenance of any product purchased from Trench Drain Supply and/or its manufacturers. TRENCH DRAIN SUPPLY MAKES NO WARRANTY, EXPRESS OR IMPLIED, AS TO THE SUITABILITY, DESIGN, MERCHANTABILITY, OR FITNESS OF THE PRODUCT FOR CUSTOMERS APPLICATION. The drawing and information provided remain the property and copyright of the manufacturer listed. The manufacturer reserves the right to modify specification without notice.</p>	